



Always the Right Solution™

Section:
Moyno® 500 PUMPS

Page: 1 of 2

Date: September 30, 1996

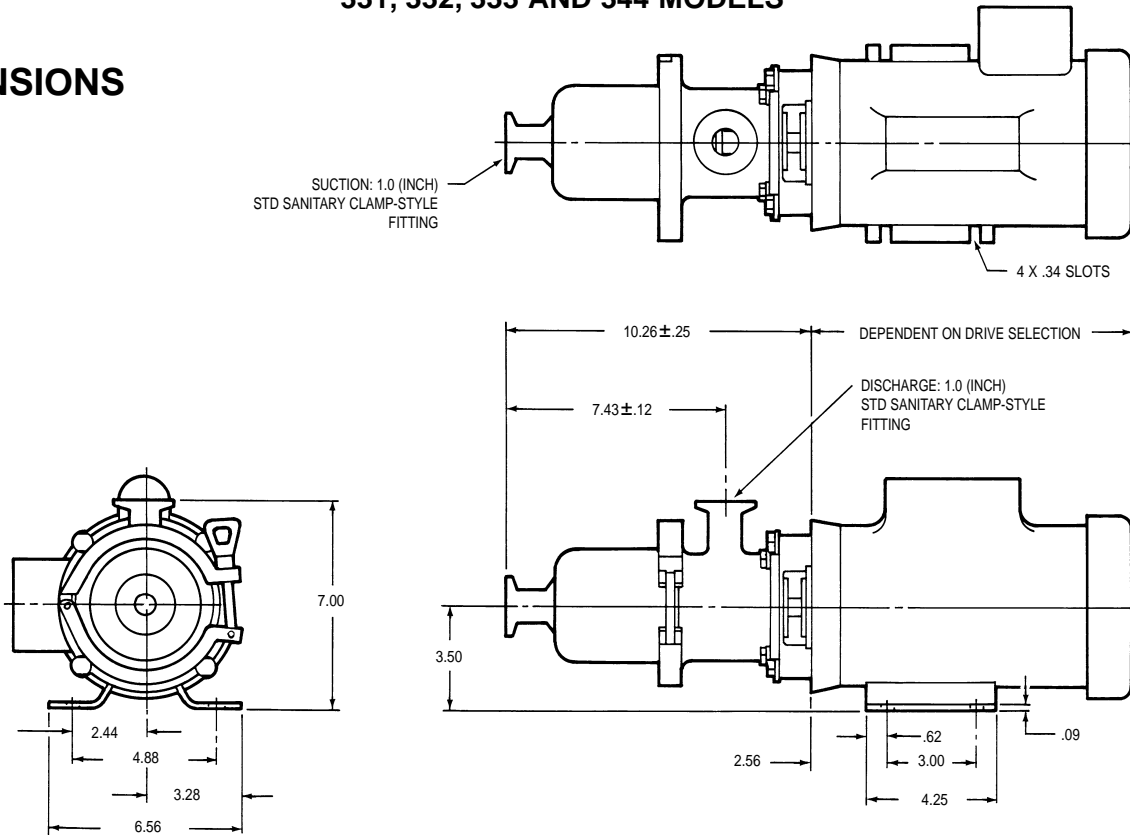
SPECIFICATION DATA

MOYNO® 500 PUMPS

SANITARY/HYGIENIC MOTORIZED

331, 332, 333 AND 344 MODELS

DIMENSIONS



MATERIALS OF CONSTRUCTION

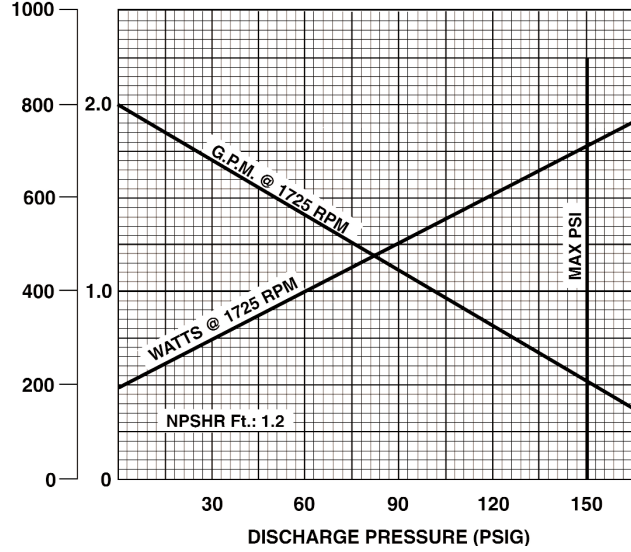
COMPONENT	SANITARY MODELS		HYGIENIC MODELS	
	33116, 33216 33316, 34416	33126, 33226 33326, 34426	33117, 33217 33317, 34417	33127, 33227 33327, 34427
Housings	316 SS#4 Finish	316 SS#4 Finish	316 SS (Not Polished)	316 SS (Not Polished)
Rotor	316 SS/CP	316 SS/CP	316 SS/CP	316 SS/CP
Stator	Nitrile (FDA Food Grade)	Nitrile (FDA Food Grade)	NBR (Nitrile STD.)	NBR (Nitrile STD.)
Motor Data	1/2 HP, 1 PH 115/230 VAC 60 HZ TEFC Washdown Duty	1/2 HP, 90V DC, TENV Washdown Duty	1/2 HP, 1 PH 115/230 VAC 60 HZ TEFC	1/2 HP, 90V DC, TENV
Weight (lbs)	41	41	41	41

CP=Chrome plated

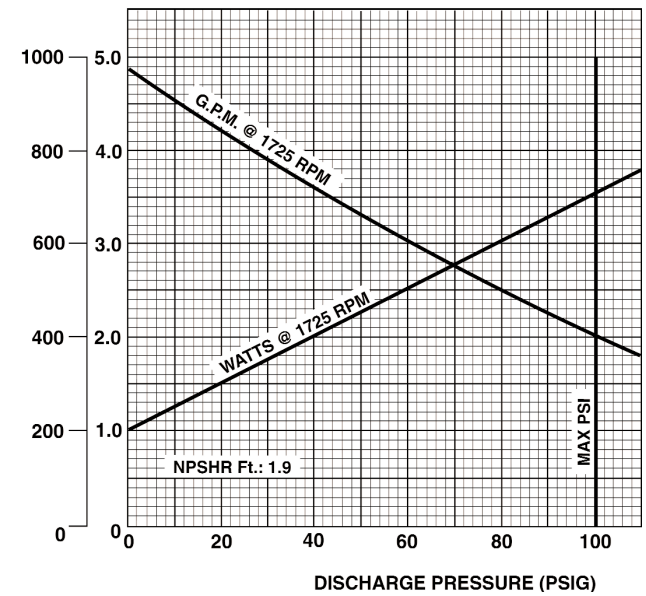
**All dimensions are in inches.
 Specifications subject to change without notice.**

331, 332, 333 and 344 MODELS PERFORMANCE (Water at 70°F)

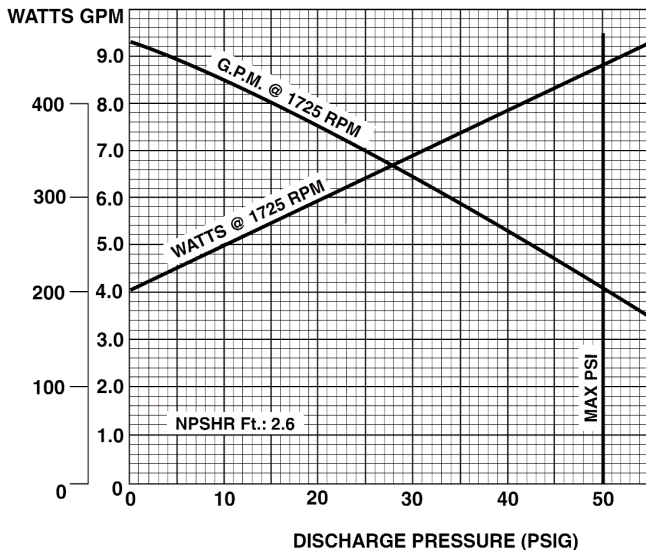
WATTS GPM 331 MODELS



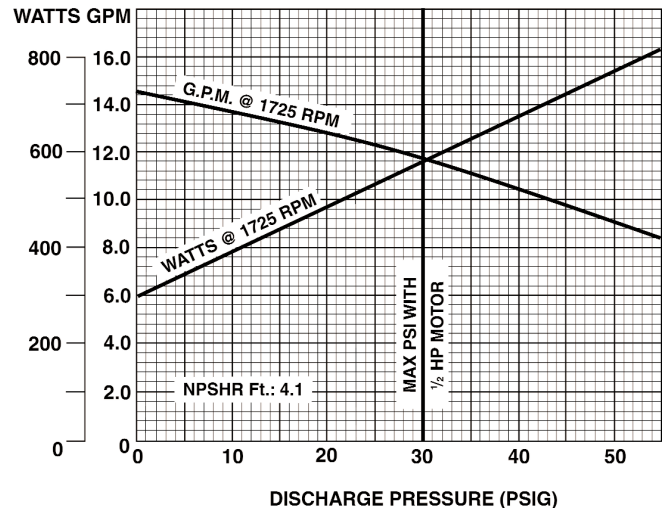
WATTS GPM 332 MODELS



333 MODELS



344 MODELS



NOTE: With the standard 1/2 HP motor, maximum fluid viscosity is 100 CP (500 SSU).