



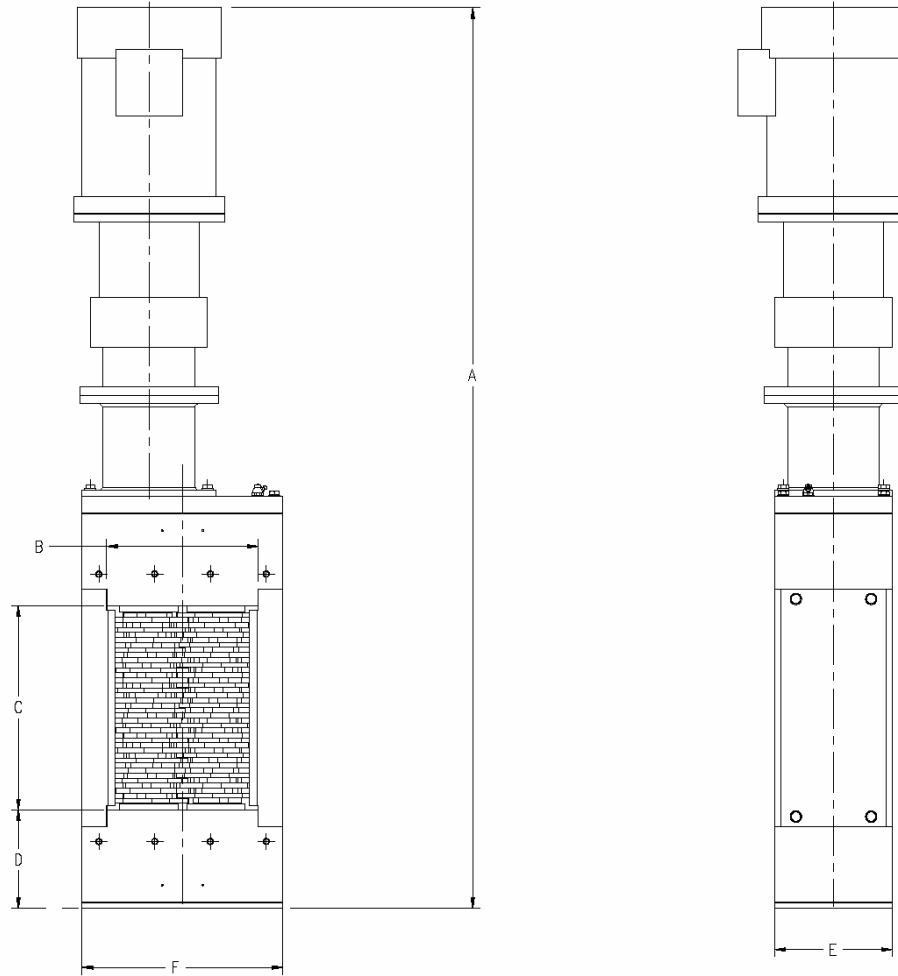
Always the Right Solution™

Section: **Moyno® Grinders**  
**DIMENSION SHEET**

Page: 1 of 3

Date: October 2004

### Moyno® Annihilator™ Series 2 & 3 Channel Design

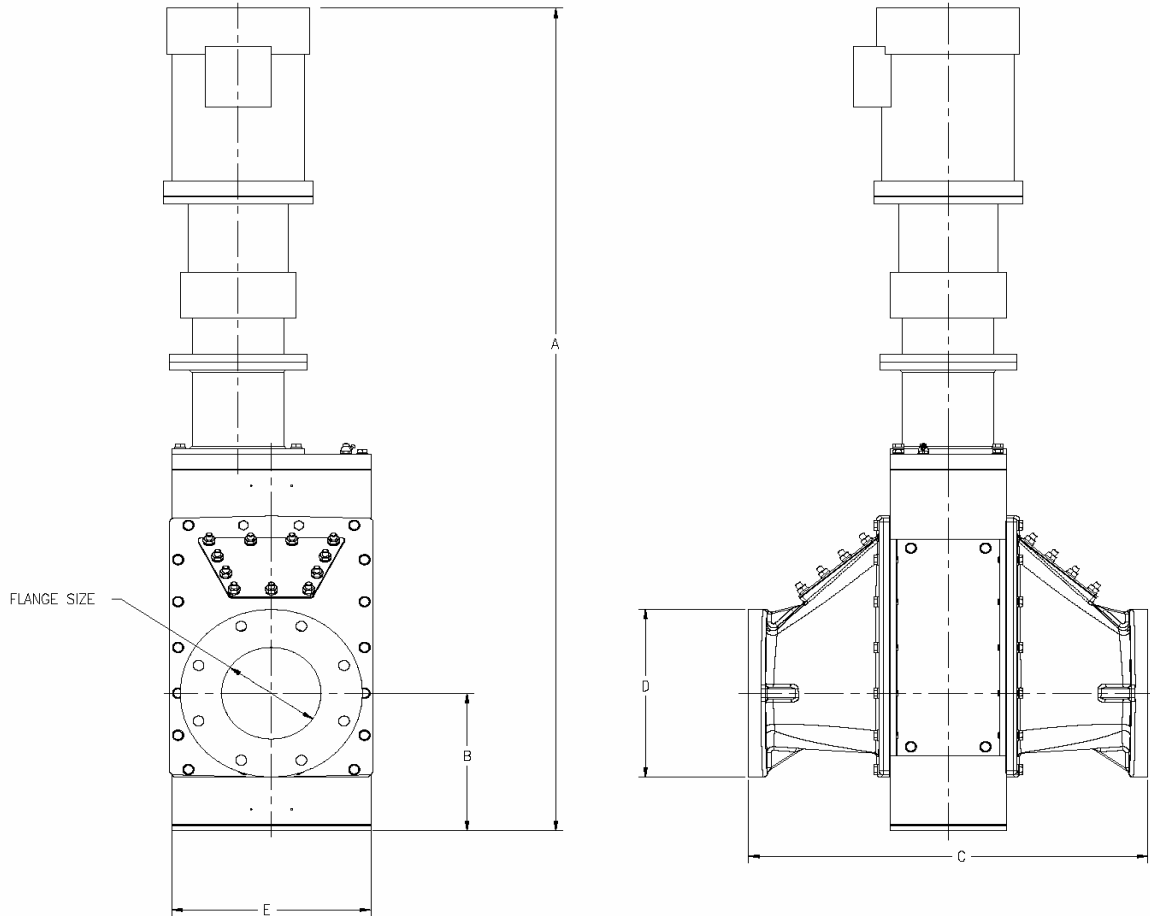


Model	A(1)	B	C	D	E	F	Max. GPM(l/s)	Approx. Wt. Lbs(kg)
M08C3	49.95 (1269)	9.06 (230)	8.0 (203)	5.91 (150)	7 (178)	12 (309)	275 (17)	390 (177)
M12C3	53.95 (1370)	9.06 (230)	12.0 (305)	5.91 (150)	7 (178)	12 (309)	425 (27)	425 (193)
M18C3	59.95 (1523)	9.06 (230)	18.0 (457)	5.91 (150)	7 (178)	12 (309)	725 (46)	470 (213)
M24C3	65.95 (1675)	9.06 (230)	24.0 (610)	5.91 (150)	7 (178)	12 (309)	1000 (63)	520 (236)
M32C3	73.75 (1873)	9.06 (230)	32.0 (813)	5.91 (150)	7 (178)	12 (309)	1500 (95)	580 (263)
M40C3	81.55 (2071)	9.06 (230)	40.0(1016)	5.91 (150)	7 (178)	12 (309)	2000 (126)	640 (290)
M60C3	105.57 (2681)	9.06 (230)	60.0 (1524)	5.91 (150)	7 (178)	12 (309)	3400 (214)	835 (379)
M18C2	75.32 (1913)	14.81 (376)	18.0 (457)	6.04 (153)	11.0 (279)	19.5 (495)	1000 (63)	1300 (590)
M24C2	81.48 (2070)	14.81 (376)	24.0 (610)	6.04 (153)	11.0 (279)	19.5 (495)	1400 (88)	1420 (644)
M32C2	89.40 (2271)	14.81 (376)	32.0 (813)	6.04 (153)	11.0 (279)	19.5 (495)	1800 (114)	1580 (717)

Dimensions in inches (mm)

(1) Height includes a 3 HP motor for "C3" models and 10 HP for "C2" models.

**Moyno® Annihilator™ Series 2 & 3**  
**Flanged Design**



Model	A	B	C	Flange Size (2)	D	E	Max. GPM(l/s)	Approx. Wt. Lbs(kg)
M04F3	49.95 (1269)	8.51 (216)	20.06 (510)	4 (100)	9.0 (229)	12.0 (309)	400 (25)	480 (218)
M06F3	53.95 (1370)	9.07 (230)	24.06 (611)	6 (150)	11.0 (280)	12.0 (309)	600 (38)	560 (255)
M08F3	53.95 (1370)	10.32 (262)	26.06 (713)	8 (200)	13.5 (343)	12.0 (309)	800 (50)	635 (289)
M10F3	59.95 (1523)	11.45 (291)	30.06 (764)	10 (250)	16.0 (407)	12.0 (309)	1000 (63)	720 (327)
M12F3	65.95 (1675)	12.07 (307)	34.06 (865)	12 (300)	19.0 (483)	12.0 (309)	1200 (76)	870 (395)
M12F2	81.48 (2070)	11.78 (299)	35.06 (891)	12 (300)	19.00 (483)	20.0 (508)	2500 (158)	1660 (753)
M16F2	81.48 (2070)	13.78 (350)	43.24 (1098)	16 (400)	23.50 (597)	20.0 (508)	3500 (221)	1740 (790)
M18F2	81.48 (2070)	13.78 (350)	47.00 (1194)	18 (450)	25.00 (635)	20.0 (508)	4000 (252)	1810 (822)

Dimensions in inches (mm)

- (1) Height includes a 3 HP motor for "F3" models and 10 HP for "F2" models
- (2) Mates to ANSI standard flanges.



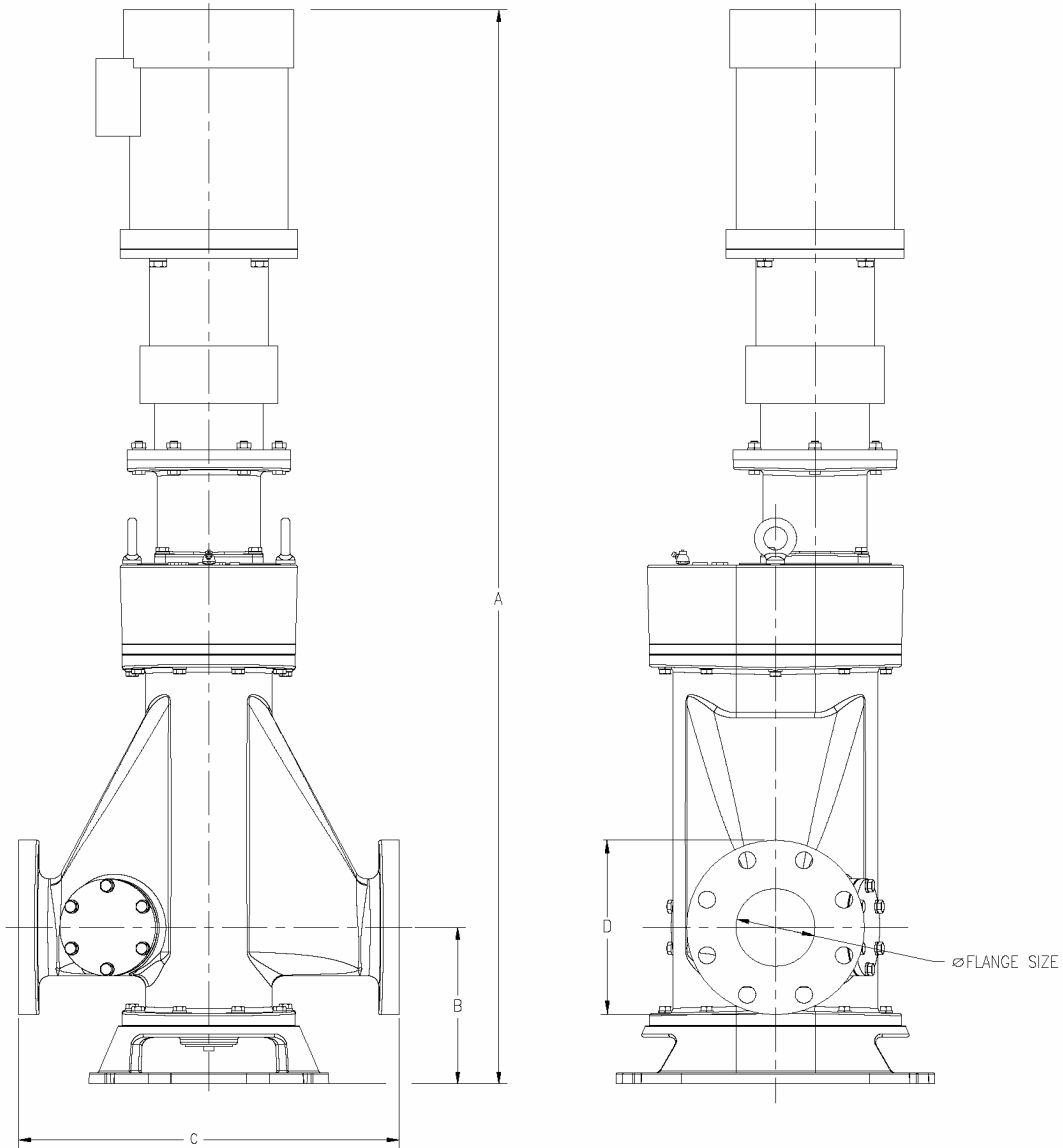
Always the Right Solution™

Section: Moyno® Grinders  
DIMENSION SHEET

Page: 3 of 3

Date: October 2004

### Moyno® Annihilator™ Series 4 One-Piece Flange Housing Design



Model	A (1)	B	C	Flange Size (2)	D	Max. GPM(l/s)	Approx. Wt. Lbs(kg)
M04F4	55.37 (1407)	8.06 (205)	19.25 (489)	4 (100)	9.0 (229)	400 (25)	472 (215)
M06F4	55.37 (1407)	9.06 (231)	21.25 (540)	6 (150)	11.0 (280)	600 (38)	493 (229)
M08F4	55.37 (1407)	10.06 (256)	23.25 (591)	8 (200)	13.5 (343)	800 (50)	525 (239)
M10F4	67.37 (1711)	11.06 (281)	27.25 (693)	10 (250)	16.0 (407)	1000 (63)	692 (314)
M12F4	68.37 (1737)	13.06 (332)	31.25 (794)	12 (300)	19.0 (483)	1200 (76)	765 (347)

Dimensions in inches (mm)

- (1) Height includes a 3 HP motor.
- (2) Mates to ANSI standard flanges.